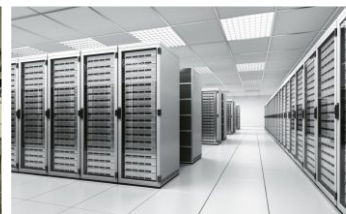




SafeTestUk

Electrical Inspection & Testing Specialists



# Contents

Safe Test UK - Electrical Specialists **01**

## ***Our Services***

Portable Appliance Testing **02**

Fixed Installation Testing **03**

Thermographic Surveys **04**

Electrical Load Analysis **04**

Risk Assessment **04**

Emergency Lighting Inspection & Testing **05**

Full Electrical Installation Remedies **06**

Our Pricing **07**

Our Promise **08**

What Our Clients Say **09**

## SafeTestUk



As an employer it is a company's legal duty to provide a safe working environment for both employees and customers. With over 1000 accidents involving electric shock or burns reported to the Health and Safety Executive each year, regular Electrical Inspection and Testing is an important preventative measure for health and safety.

The Electricity at Work Regulations 1989 states that, 'As may be necessary to prevent danger all systems shall be maintained so as to prevent so far as is reasonably practicable such danger.'

To meet the requirements of The Electricity at Work Regulations 1989, The Electricity at Work (Northern Ireland) 1991 and the Health & Safety At Work Act 1974, it is widely regarded to be necessary to implement a programme of planned inspection and testing of fixed installations and portable appliances.

Electrical Inspection and Testing also satisfies the requirements of many insurance companies, since most major underwriters indicate that they expect the businesses they insure to be compliant with all applicable regulations when insuring the business. An insurer may reduce, delay or even refuse to pay on a claim for damage, if a fixed installation or portable appliance that has not been tested has led or contributed to the damage.

With electrical faults being one of the main causes of accidental fires in commercial buildings, the financial loss from downtime as well as damaged buildings, equipment and stock can be substantial.



# Electrical Specialists

## Our Background

Safe Test UK specialise in providing premium Electrical Inspection and Testing services at competitive prices to fulfil an employers legal obligation and to prevent financial loss through keeping electrical equipment safe from shock and fire.

With over 15 years experience, the nationwide Safe Test UK team of professional qualified engineers combine their comprehensive knowledge and skills with the highest quality calibrated test equipment to provide complete peace of mind.

All of our engineers hold the City & Guilds 2377/01 or 2377/02 Certificate of Competence for the Inspection and Testing of Electrical Equipment and City & Guilds Certificate 2391 in Electrical Installation Testing as a minimum.

## Our Commitment

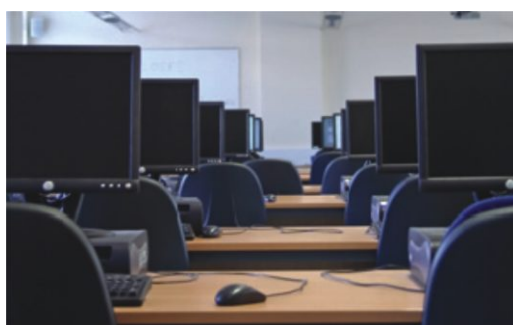
We are committed to providing our customers with the highest level of service tailored to each company's requirements through working closely with the customer. The quality of customer service is of vital importance to us and we pride ourselves on our ability to listen and respond to the individual needs of our customers.

We offer our customers value for money through continuously improving our services whilst maintaining competitive prices.

## Our Vision

We strive to become one of the market leaders within the UK and Ireland Electrical Inspection and Testing market, delivering economic value to each of our customers through quality management of their assets, projects, products and systems, resulting in a licence to operate, reduction of risk and performance improvement.

To achieve this aim, we seek to improve our level of competency and to nurture the personal development of each employee through training and support, to enable them to provide reliable services that are consistent with the expectations and requirements of our customers.



# Portable Appliance Testing

At Safe Test UK, we verify, as far as is reasonably practical, that the company's portable electrical appliances are in safe condition to satisfy the requirements of BS EN ISO 9001:2000 and comply with The Electricity at Work Regulations 1989, The Electricity at Work (Northern Ireland) 1991 and the latest HSE Guidelines.

We recommend that portable appliance testing is carried out on an annual basis, however the appropriate frequency of testing will be dependent on the design of the appliance (Class I or Class II), how easy it is to move and where it is used.

***Portable appliance testing includes a thorough visual inspection of the appliance to check for:***

- Damage to the flex
- Damaged to the plug and casing (overheating, burn marks, discolouration)
- An incorrectly wired plug
- An incorrectly rated fuse

***For each of the above, where applicable, the following tests are carried out:***

- Function
- Earth Continuity
- Insulation Resistance
- Internal Inspection
- Flex Polarity
- Earth Leakage
- Microwave Leakage
- Operational

Our engineers carry out both visual and instrument tests in accordance with guidelines and testing procedures laid down by the IEE Code of Practice for Inspecting and Testing of Electrical Equipment.

### ***Remedial Action at No Extra Cost***

Appliances are discreetly labelled with the result of the test (pass or fail) and any remedial action that can be taken during testing, including repairing and replacing faulty plugs and fuses, will be carried out at that time at no extra cost.

### ***Comprehensive Reporting***

On completion of the testing, a certificate of testing and a comprehensive detailed report including each unique appliance number will be issued within five working days. For your convenience, all reports can be downloaded from our website using a secure username and password.

### ***Minimum Disruption***

Since all appliances need to be unplugged for testing, we realise the inconvenience and disruption that this can cause, that's why we offer an out of hours and weekend service at no extra charge.





## Our Services

# Fixed Installation Testing

To comply with The Electricity at Work Regulations 1989, The Electricity at Work (Northern Ireland) 1991 and HSE guidelines, all electrical systems must be tested and inspected and tested every three months to five years depending on the type of premises.

All electrical installations deteriorate over time due to a number of factors such as damage, wear, tear, corrosion, excessive electrical loading, ageing and environmental influences. As a result, the purpose of a Periodic Inspection & Testing Report of a Fixed Installation is to prove, so far as is reasonably practicable:

- The safety of persons and livestock against the effects of electric shock and burns.
- Protection against damage to property by fire and heat arising from an installation defect.
- Confirmation that the installation is not damaged or deteriorated so as to impair safety.

Following the initial visual inspection of all installation components, our qualified engineers will carry out the following tests to determine the health of the fixed installation:

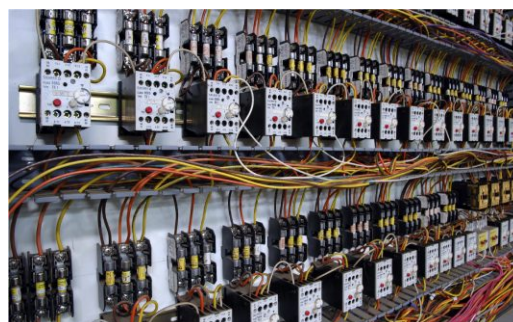
- Continuity of protective conductors
- Continuity of bonding conductors
- Ring final circuits conductors
- Insulation resistance test
- Polarity testing
- Earth fault loop impedance
- Prospective fault current
- Functional test

### ***Flexible Service***

We believe in offering a flexible out-of-hours and weekend service, at no extra charge, to minimise the disruption and interruption that Fixed Installation Testing can cause to the day-to-day running of the business.

### ***Detailed Reporting***

All tests are carried out in accordance with chapter 73 of the I.E.E. Wiring Regulations and all identified faults are categorised with a rating of 1 - 4, depending on the severity of the fault found. The final report will be available to download from our website using a secure username and password.



Electrical Inspection & Testing Specialists

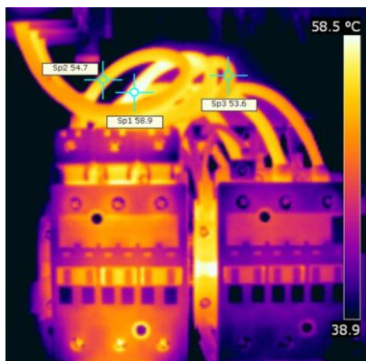
# Thermographic Surveys

We use the latest thermal imaging technology on distribution boards, switchgear, control panels and other related items to identify potential faults before they arise, to avoid costly breakdowns, fires or accidents.

Heat is often invisible to the naked eye and potential problems may not be readily identifiable with standard electrical testing. As a result, thermal imaging is a valuable diagnostic tool for detecting overloads and unbalanced loads, harmonics, loose connections and bad wiring, allowing corrective action to be taken before costly system failures occur.

In most cases Thermographic Surveys can be carried out without disruption to the power supply, however if excessive temperatures are found, it may be necessary to remove covers from distribution boards to allow for closer inspection of cabling.

We provide a comprehensive Thermographic Survey report, showing both digital and infra-red images, to assist in identification of plant and a detailed log of all faults exposed.



# Electrical Load Analysis

As most organisations continue to use an increasing number of high-tech devices, the current drawn through the electrical system can fluctuate and cause a variety of problems, including a build up of heat. At the same time, there can be surges in the system, causing circuit breakers to trip and the premature failure of motors, transformers and other electrical components.

Our experienced engineers carry out detailed test procedures to identify the source of any potential electrical problems and to ensure that your installation is working at optimum capacity.

The comprehensive survey report includes an evaluation of the voltage, current flow, power factor, power consumption and harmonics.

# Risk Assessment

We carry out full risk assessments, with minimal disruption, to identify high and low risk areas to both staff and property.

The final report allows you to prioritise further testing within your maintenance programme, to phase both the cost and work load according to the level of risk, whilst maintaining compliance standards.



## Our Services

# Emergency Light Testing

We offer a comprehensive emergency lighting test and inspection for each individual building in line with the recommendations of BS5266-1999 emergency lighting.

We will survey the whole of your building, creating a log of your emergency lighting to include the location and type of fitting as well as giving each fitting an identification number.

Once the log has been created we will then carry out an annual 3 hour drain test which entails allowing your emergency fittings to come on until flat. During the 3 hour test our engineer will walk the building checking random fittings internally and listing faults found in the log. Any fitting that does not last the duration will be marked in the log as failed.

Upon completion of the test the log is completed with all results and a copy will be passed to our remedial department who will raise a no obligation quote for any remedial works required.

***Emergency lighting is a mandatory requirement to be installed where artificial lighting is installed. Remember, Emergency Lighting is designed to help save lives.***

Our engineers will also determine whether or not the layout and proximity of emergency fittings is correct as recommended in BS5266-1999. Any deviations from this will be highlighted and suggestions will be offered as to how to rectify this.

We also offer a six monthly test which allows for a 1 hour drain of all fittings as well as the full inspection as above.

The log will be updated at each test date and our staff will inform you when they are due so that you have no need to concern yourselves with missing dates.

Should you require any more information on Emergency Lighting then please call and one of our engineers will be pleased to assist.



Electrical Inspection & Testing Specialists



# Remedial Service

We offer a full remedial service to rectify faults which are highlighted during our inspection and test. With over 30 years experience our engineers will offer the most cost effective resolution to your faults, whilst ensuring that the safety and effectiveness of your electrical installation are not impaired.

All our engineers are fully qualified JIB Approved Electricians with 17th edition IEE regulation accreditation.

We price ourselves on good standards of workmanship along with excellent client liaison. We understand that in many areas of industry speedy resolutions are paramount with as little disruption as possible and we strive to understand all our clients' needs.

We offer a no obligation quotation at the end of each inspection and test which will detail the works required and the costs associated. This can be taken up at any time up to 60 days after the test date.

All materials that we use are to the correct British Standards and are fitted as per the manufacturer's instructions.

We are also able to carry out new installation works as required by our clients and quotations are available on request from our engineering team.

We have an excellent client relationship with many of our larger customers, including Biz Space throughout the UK and Bath University who have instructed us to carry out all the remedial works for the testing we carry out for them on a rolling yearly basis.

When we carry out your remedial works we guarantee a satisfactory test certificate upon completion. This will automatically be uploaded to your personal space on our web page.

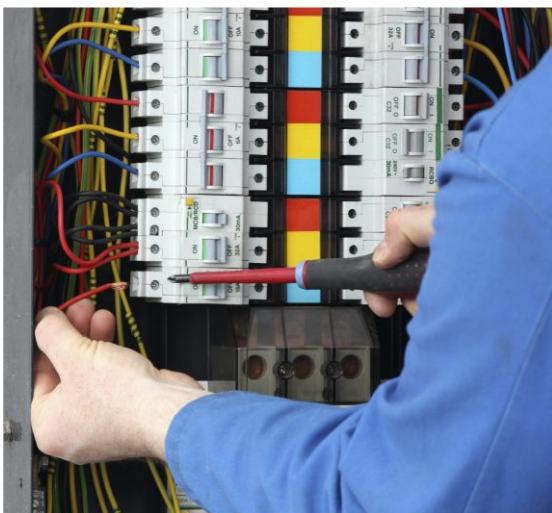
Whatever your electrical needs you can speak to a member of our engineering team who will be more than happy to assist.

# Comprehensive Reporting

For your convenience, all reports are issued within 5 working days and can be downloaded from our website using a secure username and password.

# Minimum Disruption

We understand the inconvenience and disruption that Electrical Inspection and Testing can cause, that's why we offer a flexible out of hours and weekend service at no extra charge.





# Our Pricing

We believe in giving our customers a clear pricing structure with no hidden charges.

Pricing includes:

## Portable Appliance Testing

- Out of hours and weekend service
- Full visual inspection of the items to be tested
- Instrument testing using the latest equipment
- Test reports
- Certification
- Equipment register
- Pass or Fail labels
- Supplying and rewiring BS1363 Plugs
- Replacing and fitting correctly rated fuses

## Emergency Lighting Testing

- Out of hours and weekend service
- Full visual inspection of lights tested
- Full 3 hour drain down test of batteries
- Full survey of site to check compliance with BS5266
- Emergency lighting log compiled for each building
- Test results issued complete with log

## Fixed Inspection & Testing

- Out of hours and weekend service
- Full visual inspection and insulation testing including distribution, boards, sockets, lighting fixed appliances, R.C.D's, etc
- Test reports
- Certification
- Equipment Register

For further information or to receive a free no-obligation quotation, please contact our customer service team on

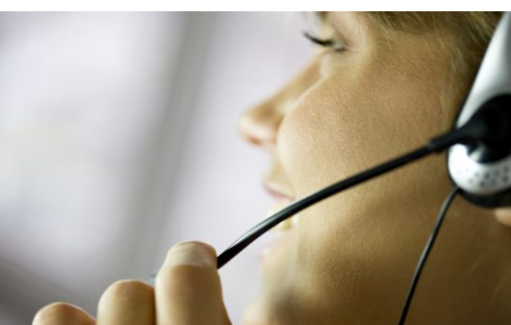
**Telephone: 01226 246333**

**Fax: 01226 246320**

**Email: [info@safetestuk.com](mailto:info@safetestuk.com)**

**or visit [www.safetestuk.com](http://www.safetestuk.com)**

and complete our short online form and we will contact you shortly.



Electrical Inspection & Testing Specialists

# Our Promise

*Safe Test UK is committed to customer satisfaction. We keep our overheads low by ensuring our prices and quality of work drive us forward and not an expensive sales force.*

*We are dedicated to continuously improving the services that we provide through capturing valuable customer feedback, continuous training and development and through maximising the efficiencies of our internal systems.*

*We promise to:*

- 1. Maintain a Quality Management System satisfying the requirements of BS EN ISO 9001:2000 which forms the framework for achieving continual improvement, complete client satisfaction and full realisation of all company objectives.*
- 2. Focus on the requirements of customers, establishing levels of communication capable of fully determining their needs and expectations.*
- 3. Establish and maintain an infrastructure capable of supporting all company activities and realising all company objectives.*
- 4. Identify scope for improvement in every aspect of the company's activities, devising and implementing effective solutions throughout.*

*We are committed to quality and integrity in everything we do.*

*Yours sincerely,*



*Ian & Mark Jagger, Managing Directors*



## What our clients say...

"Very large and complex site, your engineer did a super job of locating all appliances and finding his way around the site, liaised well with all our employees and myself causing minimum disruption to our working schedules as per last year. We will certainly use you again next year"

**Edwin Woodhouse & Co Ltd, Farsley**

"The testing in the tower went very smoothly, your personnel were prompt and professional."

**M.W. Kellogg Limited, London**

"A very friendly and efficient service."

**The Royal Institute of International Affairs, London**

"I am very happy with the overall service and the prices of service. I have recommended you to others."

**Egmont UK Limited, London**

"This is the second year our PAT has been completed by Safetest, very good service again."

**Berry Bros & Rudd, Basingstoke**

"The engineers onsite were excellent, very friendly and informative."

**Brodies Solicitors, Glasgow**

"It was a pleasure to be associated with and assist with a successful and well maintained ISO 9001:2000 implementation"

**QMUK Assessor**

"We have found Safe Test UK to be courteous, punctual and very accommodating, as well as being competitively priced. We will be using them again next time our testing comes around. Thanks."

**TD Waterhouse, Manchester, Leeds, London**

"Job well done. All your engineers were very well mannered and professional at all times."

**Barratt, West London**

"I would recommend Safe Test UK to others who require PAT testing."

**Shell Gas (LPG), Nationwide**

"Extremely pleased with the way the testing went. Overall feedback from the sites was excellent."

**JN Bentley, Nationwide**

"They were non-obtrusive and discreet."

**Barnsley College, South Yorkshire**

"Excellent on-line retrieval facilities for test documentation. Very easy to access and understand."

**Avery Weight Tronix**

"I feel the service we receive from SafetestUK is excellent and will continue to use them for C-I-C."

**C-I-C**

"I find the whole team very helpful and friendly and always professional."

**Bradford & Bingley Group Plc**

"The three engineers that attended Bournemouth were very good, well organised, customer focussed and focuses/friendly to/on our customers as well."

**Britannia Hotels**

"Very pleased with the service provided and will be using SafetestUK again."

**ARM Holdings**

"Very pleased with the service so much so I have recommended you to 2 other companies."

**BWB Consulting Leeds**



Electrical Inspection & Testing Specialists





## Contact us...

BBIC Innovation Way  
Wilthorpe Road  
Redbrook  
Barnsley  
South Yorkshire  
S75 1JL

**t:** 01226 246333

**f:** 01226 246320

**e:** [info@safetestuk.com](mailto:info@safetestuk.com)

**w:** [www.safetestuk.com](http://www.safetestuk.com)

